

# MGM Newsletter

Volume - I, 2018

MGMEI Consultants attended the [76th AIOS Annual Conference](#) from 22-Feb to 25-Feb 2018 at Coimbatore and participated in Leadership Development Programs and other scientific deliberations, conducted Instruction Course on “All About Ophthalmologists Operation Theatre - Infection Control Practices and Protocols” and presented the state best paper nominated by Chhattisgarh State Ophthalmological Society (CSOS), 2017.

MGM Eye Institute started the [World Glaucoma Week](#) (11th to 17th March 2018) with Glaucoma awareness candle light rally at Marine drive Telibandha, Raipur on 11th March evening, joined by doctors and public. The theme was "GREEN = Go get your eyes tested for Glaucoma Save Your Sight!"



Dr. Ping Fei from Xin Hua Hospital, Shanghai, China was the [First International Phaco trainee](#) who completed her training in MGM Eye Institute from February to March 2018. She is presently Retina consultant in Xin Hua Hospital, Shanghai, China.







**Refresher Training of Paramedical Ophthalmic Assistant Officers (PMOAOs)** was held in four batches each of six days duration starting from 8th January to 3rd February, 2018 at MGM Eye Institute, Raipur under the aegis of National Program for Control of Blindness (NPCB).

**NABH orientation workshop** was held on 14-01-2018 at MGM Eye Institute by Dr Suneeta Dubey and MR. A. K. Singh from Dr. Shroff's Charity Eye Hospital New Delhi. Consultant doctor's, administrator's and staff attended the one day workshop.



**Training on "Low Vision"** was organized for Chhattisgarh State Eye Surgeons and Paramedical Ophthalmic Assistant Officers (PMOAOs) from 5th February to 24th February, 2018 at MGM Eye Institute, Raipur under the aegis of NPCB







The three **vision centers under MGMEI** - Saraipali, Mahasamund, Gudhiyari, Raipur, Simga, Balodabazaar caters to the rural population in the state of Chhattisgarh imparting primary eye care facility to the unreached and referring complicated eye related diseases to MGM Eye Institute for further management at the earliest to preserve vision and correction of the disease.

Interaction between the patients in vision center and the eye specialist at MGMEI is done by tele-ophthalmology with the aid of smart phones and internet.



**The Mobile Clinic** provide comprehensive eye checkup facilities in Rural areas and unreached places of Chhattisgarh. So far 4885 screening at 17 schools and 16 camps have been carried out. This van has a A-Scan, Keratometer, Fundus Camera, Slit Lamp, Auto refractometer and facility for Optical dispensing .



**Eye camps** were conducted in the remote areas of Raipur District by MGMEI in rural areas to screen patients with cataract, Glaucoma and other eye related diseases and necessary treatment was done free of cost .

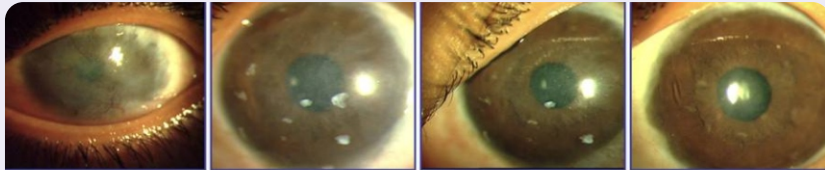
**Society of Urban and Rural Welfare Economic Development (SURE)** health camp was conducted by MGMEI at Khamardhi, Raipur on 18th February 2018.





## A Novel Technique "SLET" gives new vision to Child

This is a story of a 6-year old boy from a village in Dhamtari district of Chhattisgarh, who while playing outside came across a packet of lime or chuna used for eating paan. The packet burst when he tried to open it and its contents entered his eyes. After washing his eye his mother took him to the nearby health center where they were asked to seek treatment at Raipur. As his father was out of the village it was only after 3 days that they came to MGM Eye Institute. Here he was diagnosed with Alkali burn of the left eye. The entire surface of the eye was damaged from lime. His eyes were copiously washed with sterile saline solution and particles of lime were removed, and an amniotic membrane graft was fixed on to the surface of his eye and he was given medications. But like in all severe lime injuries, the surface of the eye failed and there was an overgrowth of membranes on the corneal surface. The doctors planned a novel technique to restore the normal surface of the eye and improve vision. This technique known as SIMPLE LIMBAL EPITHELIAL TRANSPLANTATION or SLET for short. It involves taking some donor stem cells from the normal eye and growing these stem cells on the damaged area in the affected eye. Following SLET the surface of the eye gradually healed and regained its transparency. His vision improved significantly to near normal levels. This was a significant achievement due to his young age. He lost his eye sight but regained vision by this novel technique called SLET.



**Before SLET**  
(Damaged Cornea of Eye)

**1 Month**  
after SLET

**3 Month**  
after SLET

**6 Month**  
after SLET

**MGM Eye Institute is now ICO Fellowship Host & Training Center**  
visit [www.mgmeye.org](http://www.mgmeye.org) for details.

## Services

- ❖ Cornea & Ant. Segment
- ❖ Glaucoma
- ❖ Vitreo Retina
- ❖ Pediatric Ophthalmology
- ❖ Strabismus
- ❖ Orbit, Oculoplasty & Ocular Oncology
- ❖ Custom Made Prosthesis
- ❖ Neuro Ophthalmology
- ❖ Uvea
- ❖ Low Vision
- ❖ Contact Lens
- ❖ Eye Bank
- ❖ Community Outreach

## Innovative Customised Frame Support

A 2 years old male child came to our OPD on 18 April 2018 complaining of spectacle frame not fitting on his face properly. On physical examination his nasal bridge was maldeveloped since birth and both eyes had pseudoproptosis due to high myopia (-17.00). On examination it showed that the back vertex distance is very less causing eye lashes, even cornea touching to the back surface of spectacle lens and frame was not stable on his nose. So modification of his spectacle frame was done by adjusting vertex distance by using CR 39 lens material which did not materialize and made customized nose pad with same CR 39 lens material. After finishing these modifications a head band was used to stable the frame on patient's face. After modification the lens was not touching the eye lashes or cornea and child is happily using it.



A 12 day long survey **National Blindness Survey (Epidemiological study of Avoidable Blindness in India)** was done in association with MGMEI and RP center, AIIMS, New Delhi, conducted in the from 15th- 29th December, 2017 using RAAB methodology. Dr Deepanshu Agrawal was sent as representative from MGMEI along with camp coordinator Mr Santosh Banjare, to join the 21 member team from AIIMS. Door to door screening was done for more than 3000 families in the district for cataract and diabetic retinopathy. Around 700 patients were diagnosed with cataract and some with Diabetic Retinopathy. The survey revealed high cataract and low diabetic retinopathy patients in Janjgir-Champa District of Chhattisgarh.



## Phaco/SICS Trainee for January - March 2018



**Dr. Sujata Priyambada**  
Rourkela, Odisha



**Dr. Rajesh Suryavanshi**  
Dhamtari (C.G.)



**Dr. Manoj Kumar Singh**  
Mahasamund (C.G.)



**Dr. Anusuiya Dutt**  
Raipur (C.G.)



**MGM EYE INSTITUTE**

*In Pursuit of Excellence and Equity Eye Care  
A Mission for Preventing Curable Blindness*



5<sup>th</sup> Mile, Vidhan Sabha Road, Raipur (C.G.) 493111  
Ph. : 0771- 2970670, 71, 72,  
Web Site : [www.mgmeye.org](http://www.mgmeye.org)  
E-mail : [info@mgmeye.org](mailto:info@mgmeye.org)